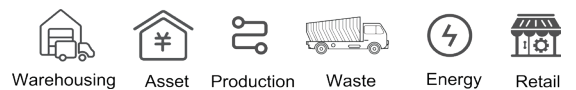


## JT-932



### UHF RFID 32-port Fixed Reader

JT-932 is a professional-grade, 32-channel SMA channel, high-performance UHF tag fixed reader developed based on the Impinj R2000 platform. With complete independent intellectual property rights, the default working frequency band of the reader is 860-960MHz, supports ISO 18000-6C (EPC C1 GEN2) protocol, has strong multi-tag recognition ability, long card reading distance, high protection performance and convenient installation and configuration, etc. features. It is suitable for warehouse logistics, material control, identification, access control and other fields.



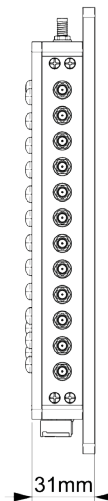
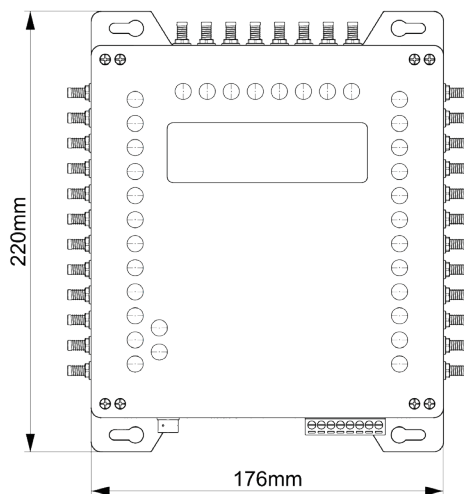
DC 9-24V    RS232    TCP/IP    GPIO 1-8

# SPECIFICATIONS

<b>RFID PARAMETER</b>	
Frequency	860-960 MHz
Protocol	ISO18000-6C/EPC C1 Gen2
Chip	based on Impinj R2000 chip
Reading rate	13~32±1dBm(adjustable)
RF power	>700 times/sec
Antenna interface	32 SMA female
RSSI	Support
RS232 baud rate	115200 bps (default)
RJ45 baud rate	230400 bps
I/O	2 trigger input or 2 relay outputs (customized)
Operate voltage	DC 9~24V/3A
Consumption	10W(@maximum output power 30dBm)
SDK	Demo&C++,C#,JAVA,Android SDK
<b>USE ENVIRONMENT</b>	
Operating Temp.	-20° C~+75° C
Storage Temp.	-30° C~+80° C
Humidity	5-90% non-condensing (+25° C )
<b>PHYSICAL PARAMETERS</b>	
Shell material	Aluminum alloy
Dimensions	220(L)*176(W)*31(H)mm
Net weight	2kg
<b>MODEL TYPE</b>	
JT-932	RS232,TCP/IP

No.	Definition	No.	Definition
1	COM2	5	IN2
2	NC2/NO2	6	IN1
3	COM1	7	GND
4	NC1/NO1	8	9-24V

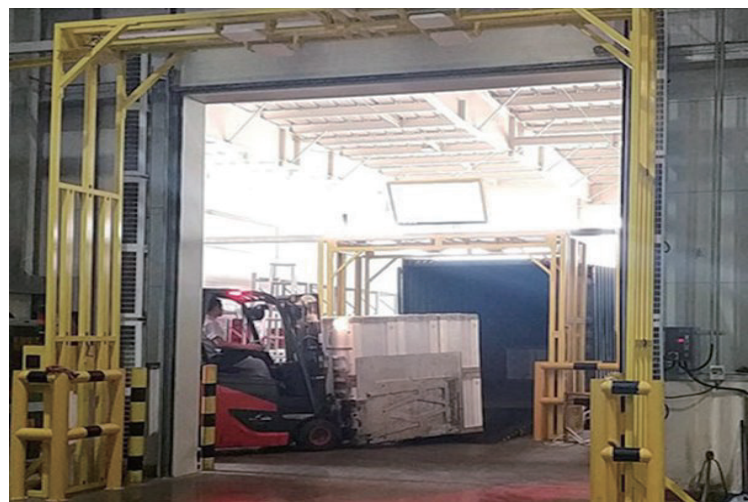
# DIMENSIONS



# APPLICATION



Cabinet Management



Warehouse Management

**Shenzhen Jietong Technology Co.,Ltd**

Address : 4/F,7 Building,Lihe industry,NO.1055 Songbai Road,Nanshan District,Shenzhen, China

Email : [marketing@jtspeedwork.com](mailto:marketing@jtspeedwork.com)

Website : [www.jtspeedwork.com](http://www.jtspeedwork.com); [www.speedwork-rfid.com](http://www.speedwork-rfid.com)