

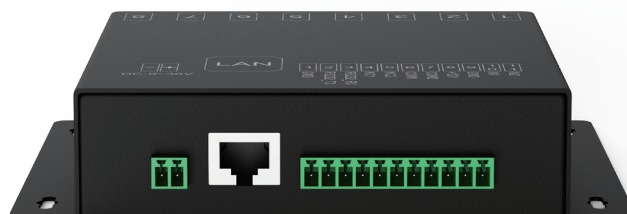


## JT-932-8



### UHF RFID 8-port Fixed Reader

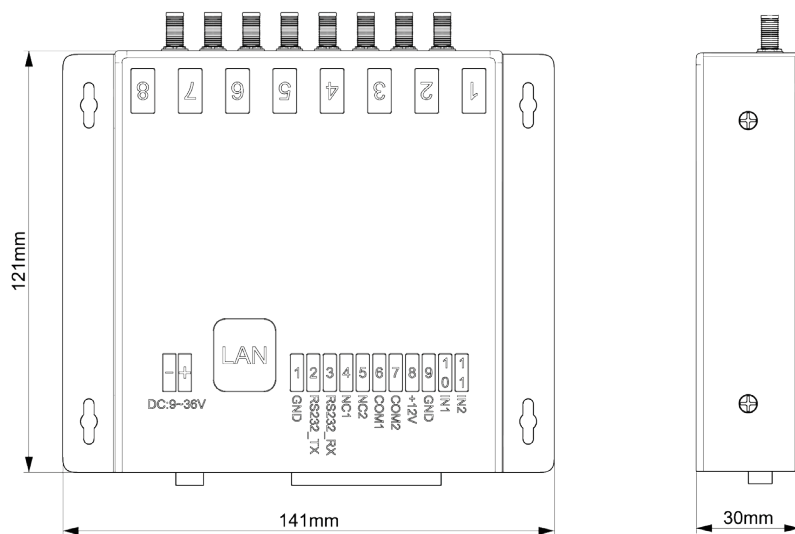
JT-932-8 is coming with professional-grade, 8-port SMA female antenna port. A new high-performance fixed reader based on the TM200 chip. With complete independent intellectual property rights, the default operating frequency band of the reader is 860-960MHz, support ISO18000-6C (EPC C1 GEN2) protocol, with strong multi-tag recognition ability, long tag reading distance, and protective. High-performance, easy installation and configuration. It is suitable for warehouse logistics, material control, identification, access control and other fields.



# SPECIFICATIONS

<b>RFID PARAMETER</b>	
Frequency	860-960 MHz
Protocol	ISO18000-6C/EPC C1 Gen2
Chip	based on TM200 chip
Reading rate	13~33dBm(adjustable)
RF power	>700 times/sec
Antenna interface	8 SMA female
RSSI	Support
RS232 baud rate	115200 bps (default)
RJ45 baud rate	230400 bps
I/O	2 trigger input or 2 relay outputs (customized)
Operate voltage	DC 9~36V/2A
Consumption	9W(@maximum output power 32dBm)
SDK	Demo&C++,C#,JAVA SDK
<b>USE ENVIRONMENT</b>	
Operating Temp.	-20° C~+75° C
Storage Temp.	-30° C~+80° C
Humidity	5-90% non-condensing (+25° C )
<b>PHYSICAL PARAMETERS</b>	
Shell material	Aluminum alloy
Dimensions	122(L)*136(W)*30(H)mm
Net weight	0.5kg
<b>MODEL TYPE</b>	
JT-932-8	RS232,TCP/IP

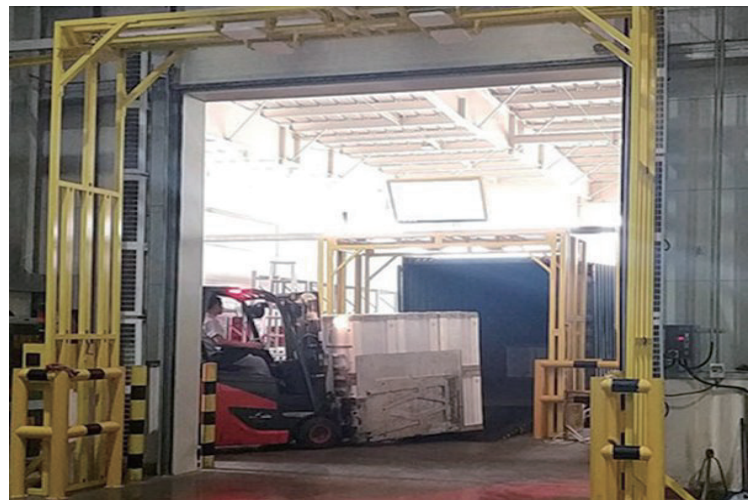
# DIMENSIONS



# APPLICATION



Cabinet Management



Warehouse Management

## Shenzhen Jietong Technology Co.,Ltd

Address : 12/F,Building A,No. 6,Shiben Road,Shiyan Street,Bao'an District,Shenzhen,Guangdong,China-518108

Email : [marketing@jtspeedwork.com](mailto:marketing@jtspeedwork.com)

Website : [www.jtspeedwork.com](http://www.jtspeedwork.com)